

**TRUSTED  
PARTNERS IN  
CONSTRUCTION.**  
**CIVILS  
GROUNDWORKS  
PIPE LAYING  
BLOCKWORK**







**WE HAVE THE  
EXPERTISE  
TO DELIVER  
YOUR VISION.**







# INTRO.

## Let's get right to the point...

If you're reading this, you're most probably interested in finding a construction partner that can deliver your project to a high standard, on time and within budget, while adhering to industry recognised health and safety practices.

You need a partner that operates a BS EN ISO 9001:2015 certified Quality Management System to ensure every project is delivered to the highest quality standard.

A partner whose health & safety management system and approach has been assessed, approved and certified to the OHSAS 18001:2007 and SMAS standards and guidelines for the supply of sub-contract labour and construction services.

A partner that has consistently delivered to a high standard on large commercial projects including the £450m Energy from Waste facility in Gloucester, to restoration such as the historic Boscawen Street in Truro.

**LV Construction is that partner for you.**



# EXPERIENCE & TRUST.

The experience we've gained delivering civils, groundworks, demolition and blockwork services on a wide range of projects across the UK enables us to quickly translate requirements into detailed work plans and set about undertaking the tasks at hand.

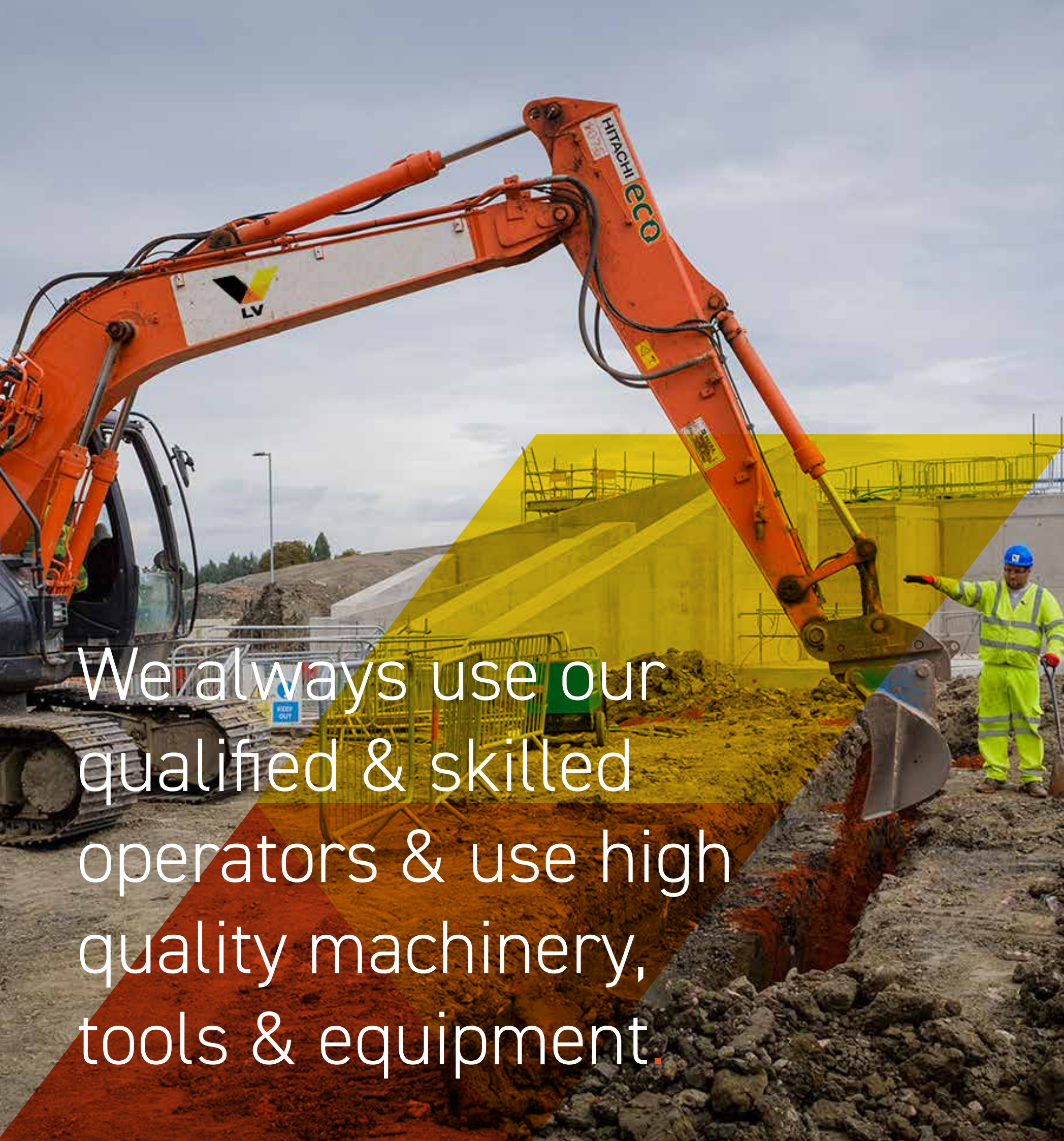
We want our clients and construction partners to have a transparent view of the work we undertake, so we provide them with a comprehensive Job Update Sheet, on which they're able to see exactly what work has been undertaken, by who and the time and costs involved.

Our Quality Management System requires our client or main contractor partner to sign off the final project quality, before the project is considered as completed by the LV Construction management team.

Delivering  
civils &  
groundworks  
services  
across the UK.







We always use our  
qualified & skilled  
operators & use high  
quality machinery,  
tools & equipment.

# EXPERTISE.

LV Construction's main expertise lies within civils, groundworks, pipe laying and blockwork, including car parks. Our team is able to work as an individual contractor or as a sub-contractor, working in tandem with other sub-contractor organisations to deliver the final result.

With a focus on safely delivering high quality projects, the LV Construction senior management team are frequently on project sites, ensuring client requirements are understood and that site specific health and safety requirements are followed.

We always use our qualified and skilled operators and use high quality machinery, tools and equipment, because we understand they will affect the outcome. All costs are transparent in the Job Update Sheet provided to clients and construction partners.

We understand that sometimes you just need more skilled labour, so we're more than happy to supply members of our team to work in your team, under your guidance.

---

*"I have worked with LV Construction on several projects, including H & W Waste to Energy, Severnside Waste to Energy, Energy Waste Hull Gasifier plant and Javelin Park Energy Recovery Centre (Gloucester). I have found LV to be very reliable, flexible, their quality of work to a very high standard, their H & S record is very good."*

*Gareth Phillips,  
Site Manager for  
leading EfW organisations.*





# OUR JOB UPDATE SHEET.

## KEEPING YOU IN THE PICTURE.

We're proud of the work we deliver and want to make sure that you feel that you can trust us to get the job done, to the standards you expect and within the timeline and budget we've agreed to.

As part of our BS EN ISO 9001 : 2015 certified Quality Management System, we've put in place a number of activities to keep you in the picture with regards to the work we're undertaking for you.

One of the ways we keep you informed is with our Job Update Sheets, which detail everything that's taking place onsite, down to

the fine detail of who's operating machinery, what hours are done and by who... by name.

Our management team are always available to discuss any aspect of our work and they impress on the LV Construction team the importance of not only conducting themselves in the manner that we expect, but also in line with the expectations of our customers – we understand it's your site.



JOB NO.

WEATHER:

VISITORS:

COMPLETED BY:	CONTRACT:	DAY:
VAS CARP	Client and project name	FRIDAY
		DATE:
		Report date

EXCAVATE FOR FIRE MAIN S-W SIDE	INSTALL SLAB-BASES FOR THE OFFICE UNITS IN THE WELFARE AREA.	LEVEL THE GROUND AND STONE UP FOOTPATHS EAST OF THE SUBSTATION.									
---------------------------------	--	---	--	--	--	--	--	--	--	--	--

No.	TRADE	NAME	START TIME	FINISH TIME	HOURS WORKED							TOTAL
1	SS	Vas Carp	07:00	17:30	3		2	2				7
2	Excav.dr.	Name	07:00	17:30	6			3				9
3	Plant Op.	Name	07:00	17:30	6			3				9
4	Carpen	Name	07:00	17:30			9					9
5	Carpen	Name	07:00	17:30			8					8
6	Ground W	Name	07:00	17:30	6			3				9
7												
8												

PLANT HIRER	PLANT TYPE	HOURS WORKED							TOTAL TIME
Plant Hire Co.	6 Ton Excavator	6	3						9
Plant Hire Co.	9 Ton Dumper	6	3						9
Plant Hire Co.	Crane	7	3						10

MATERIALS / DESCRIPTION	

KEY EVENTS: Client instruction/Work Stoppage/Any Lost Time/Plant Breakdown/Delayed Deliveries

SIGNED FOR UBB:

Signature 1:	Signature 2:	Signature 3:
--------------	--------------	--------------



# HEALTH & SAFETY : PRIORITY #1

Health & Safety is always the number one priority for the LV Construction team. We have implemented a health & safety management system and approach that has been assessed, approved and certified to the OHSAS 18001:2007 and SMAS standards and guidelines for the supply of sub-contract labor and construction services.

To support our approach to health & safety, we work with a dedicated health & safety consultancy that performs regular checks of our operational practices, including site visits, to ensure that everyone working under the LV Construction company structure is following the required approach.

When we're working in our sub-contractor capacity we ensure that all members of the LV Construction team fully understand the

health & safety requirements of the main contractor, as well as the entire site rules.

The most stringent approach always takes precedence.

---

*"Not only were LV Construction's own health & safety policies and procedures to the high level we would expect, but they were also very compliant and adhered closely to the requirements we set out while they worked on our site at the EnviRecovery development in Hartlebury."*

Neil Hallet,  
Civils supervisor, Hitachi Zosen Inova.



We work with  
a dedicated  
health & safety  
consultancy.





Vas Carp,  
MD at  
LV Construction.



# OUR QUALITY COMMITMENT.

At LV Construction we're focused on providing defect free products and services to our customers, on time and within budget.

To this end, we operate an Organisation Management System that has gained BS ENISO9001: 2015 certification, including aspects specific to the supply of construction services and sub-contractor labour.

Our management team is committed to:

- Develop and improve the Quality Management System;
- Continually improve the effectiveness of the Quality

- Management System; The enhancement of customer satisfaction.

Our approach to providing quality extends to the equipment we use, the interactions we have with customers and the way in which we conduct ourselves onsite.





# FOCUSED ON THE ENVIRONMENT.

In line with our commitment to helping improve and manage the environmental impact of the projects we're involved in, LV Construction has implemented an approach to working that has been certified and awarded the ISO 14001:2015 Environmental management system certification. We use our expertise in this area to consult with our clients to ensure work

packages are delivered in accordance with environmental considerations.



# DIGITAL WORKING & CYBER SECURITY.

**LV Construction has attained the Cyber Essentials certification.**

This demonstrates our commitment to cyber security and shows that we've put in place the required systems and process to ensure both our data and the data of our clients is kept safe against the most common cyber threats.





# MAKING PROCUREMENT EASY.

To make sure the procurement and supply chain aspect of working with LV Construction is as easy as possible, we've made sure that all the relevant information, certificates and insurance details are readily available on the industry recognised procurement portals Builder's Profile and Constructionline.







**LV Construction Ltd**  
Castlemead  
Lower Castle Street  
Bristol, BS1 3AG

**T:** 0117 917 5170

**E:** [hello@lvconstruction.co.uk](mailto:hello@lvconstruction.co.uk)  
Registration No. 906603

**[www.lvconstruction.co.uk](http://www.lvconstruction.co.uk)**

